

BART Race Timing Setup Interval Starts

The advantage of this setup for the timer is the majority of data entry is made by volunteers at the start and finish. Your job becomes one of correcting errors and managing the data not creating it. You can now Post times on the timing Screen and print interim results as requested, trouble shoot problems without being required to enter bibs during the event and relax.

START

Synch timers to computer
Timer Device 1 Channel 1
Push Button into port 2
Start wand into port 1

Operator enters bib # and POST
before each racer leaves gate.

Plunge when each racer starts



Finish

Synch timers to computer
Timer Device 2 Channel 1
Push Button into port 2
Finish Eye into port 1

Operator enters bib # and POST before each racer crosses the finish
or

Enters bib # and Enter for each finisher

Plunge when each racer finishes



Readtimer Setup for Interval Start

Primary and Backup Timing using 2 timers

Start Wand, Finish Eye and 2 Plungers

1 - Set # of timers to 2

2 - Select correct Comm Port #

3 - Primary Start is Device 1
Channel 1

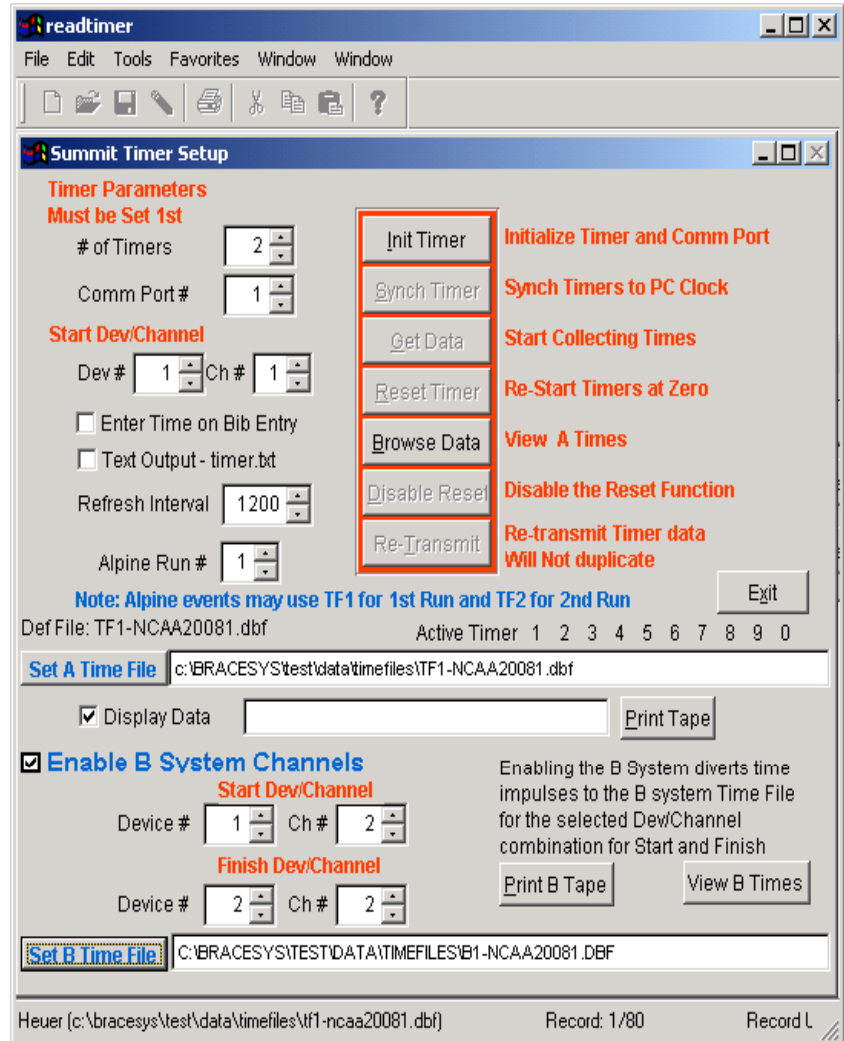
4 - Set Primary Time File

5 - Enable Backup Timing

6 - Backup Start on Dev 1 Ch 2

7 - Backup Finish on Dev 2 Ch 2

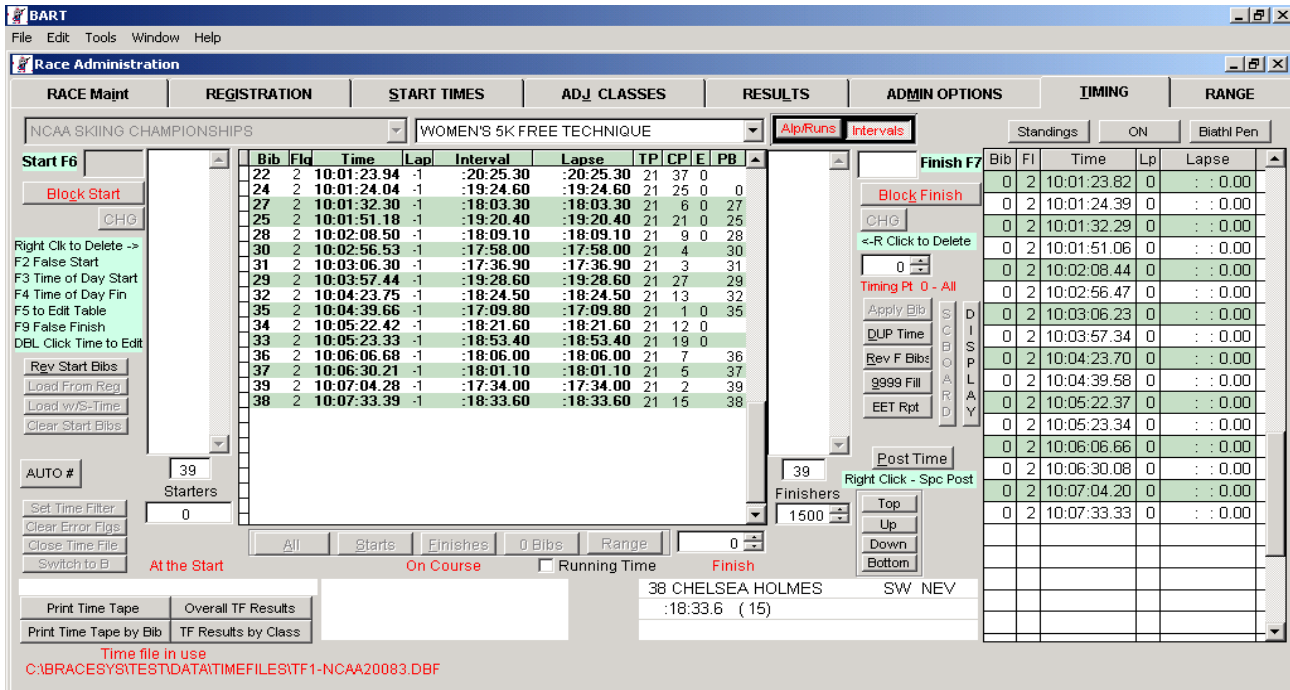
8 - Set B Time File - Click Button



Note: The B time file name is B1- + RaceID + Event #

BART Interval Timing Timing Screen

The Timing Screen allows you to manage both the Primary A times as well as the Backup B times. To see the B times in the right side window select the **B Times** button. You may Edit the bib #'s in this window if necessary. Alternatively, you may Switch to B, which places the B times in the Main Timing window.



Switching to B places all B times in the Main window and you have complete control as with A times. You can Switch back to A times or exit the timing window and when you return the A times will be in the main window.

Now Switch to A ->

